



ZOFFANY

COTSWOLDS MANOR





---

COTSWOLDS MANOR FROM ZOFFANY INVITES YOU  
TO DISCOVER A LUXURIOUS RANGE OF FABRIC AND  
WALLPAPER, INFLUENCED BY ENGLISH IDEALS  
AND THE GLORY OF COUNTRY LIFE.

---

Exploring a countryside aesthetic, Zoffany launches Cotswolds Manor, new for SS22. Inspired by an eclectic blend of documents, from the quietly confident to the opulent and extravagant, this collection plays host to an extensive history and a cornucopia of designs.

Charting the stylistic changes of English country houses over time, 10 wallcoverings, eight prints, two embroideries and two weaves, represent a world of underplayed glamour, weekend escapes and an altogether more genteel pace of life.

Peter Gomez, head of design for Zoffany says, “With each document chosen for its elegant countryside aesthetic, we’re rediscovering iconic patterns and prints that have been stored in our archive for many years. By repurposing these designs, we can give them a new lease of life, ensuring their appeal and longevity for future generations. Reminding us of Zoffany’s rich and illustrious heritage, the collection includes a luxurious range of qualities, with beautiful finishing touches such as hand embellished embroidery and elevated wallpaper substrates.”

Closely resembling a time capsule of English ideals, designs like Storks & Thrushes, included here for the first time since its initial launch, have been sympathetically updated and made relevant for today. Similarly, Chintz Lustre, one of Zoffany’s first ever designs, effortlessly bridges the gap between traditional and modern printing techniques. The grandeur of Pompadour continues to delight, with its new multi colourway adding an alternative twist to a favourite design.

Launching alongside Cotswolds Manor as part of the Luxury Coordinates range, Zoffany Domino Weaves, introduces four stunning jacquards, inspired by original 18th century domino prints from the Zoffany archive. Updated, smart and hugely versatile, each geometric design is an excellent coordinate and a wonderful way to add interest into a room.

ALL WALLCOVERINGS DESIGNED AND  
MANUFACTURED IN THE UK

---

Order a sample at  
[www.sandersondesigngroup.com/zoffany](http://www.sandersondesigngroup.com/zoffany)  
#zoffanycm





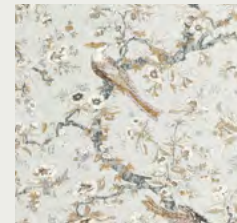
---

## CHINTZ

---

This design featured in the first ever Zoffany collection and has remained a firm favourite ever since. Originally produced as a wallpaper for Temple Newsam, a stately home near Leeds, tropical birds perch on gnarled branches amongst springtime flowers

### FABRIC



Chintz  
322738

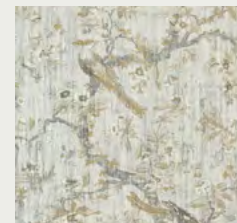


Chintz  
322736



Chintz  
322737

### WALLPAPER



Chintz  
313013



Chintz  
313014



---

## PHADERA TOILE

---

Inspired by an 18th century toile, redrawn and first produced in Zoffany's Phaedra collection, this version has been brought down in scale and printed on crisp cotton satin. Wonderfully useable, a fresh white ground showcases the design's beautiful tone work.

### FABRIC



Phadera Toile  
322739



Phadera Toile  
322740






---

## POMPADOUR

---

This all time Zoffany classic has been repainted in a relaxed watercolour style. A hand drawn interpretation of an original document, its influences are thought to come from a late 19th century French artwork, painted to emulate earlier (17th to early 18th century) woven and embroidered textiles. Quirky and uplifting, Baroque-style scrolling foliage and stylised flowers give an overall effect that is rather grand, hence the name Pompadour.

### FABRIC



Pompadour  
322741



Pompadour  
322742



Pompadour  
322743

### WALLPAPER



Pompadour  
313015



Pompadour  
313016



Pompadour  
313017

---

## VERDURE

---

Celebrating 10 years since its first launch, this hugely popular design by mural artist Melissa White is based on a 17th century painting. Depicting a lush pastoral landscape with a church, waterfalls and stylised foliage, it's influenced by religious and hunting themes.

### FABRIC



Verdure  
322746



Verdure  
320464



Verdure  
320465

### WALLPAPER



Verdure  
313020



Verdure  
310430



Verdure  
310431









## STORKS & THRUSHES

Depicting storks stood at the water's edge and small birds perched on nearby branches, this design, which was originally a wallpaper, is believed to date between 1825 and 1850. Discovered hidden behind oak panelling at Temple Newsham in 1894, this version's pictorial scene is framed by bamboo lattice work which amplifies the height of the design. Printed on fine cotton/linen twill. Pair with our Storks & Thrushes wallpaper panel.

FABRIC

WALLPAPER



Storks & Thrushes  
3122747



Storks & Thrushes  
313032

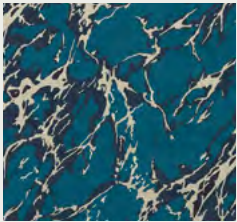
---

## FRENCH MARBLE

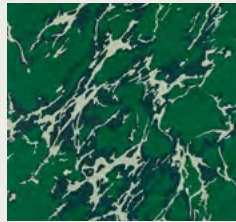
---

Evoking the colours of natural cut marble, this rotary printed wallpaper has a contemporary aesthetic and a lovely chalky ground. Originally produced by Zoffany as part of its Folio collection, the French marble that inspired this design is a symbol of elegance and refinement, gracing the entrance halls of country houses throughout Europe. The dramatic Reign Blue colourway has metallic gold markings, in contrast with the calming aesthetic of Perfect White.

### FABRIC



French Marble  
322749

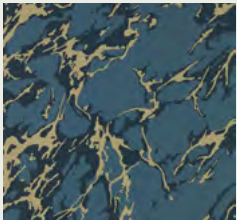


French Marble  
322750



French Marble  
322748

### WALLPAPER



French Marble  
313025



French Marble  
313026





---

## FLAME STITCH TREE

---

The exquisite, dense stitching of this tree of life design is finished with hand embroidered French knots. In an elegant two colour palette, subtle movement and a mix of techniques alludes to an affluent past. Incredibly detailed leaves and floral blooms are inspired by Jacobean crewel work.

---

## ANAR TRELLIS

---

A fabulous large scale embroidery of stylised pomegranate seeds surrounded by a decorative trellis, this striking, dual purpose design is produced on a fine, tightly woven Ottoman base. The Serpentine colourway is as per the original document and the Stockholm colourway offers a pared back alternative.

### FABRIC



Anar Trellis  
333294



Anar Trellis  
333295







---

## AVALONIS

---

BY RUTH BLANKE

Avalonis is a mythical landscape of small interlinking islands, threaded together like inviable chapters. Created by Royal College of Art graduate, Ruth Blanke, they characterise the connection between humans and animals. A stunning wide width wallpaper, Avalonis represents the flow of eternal life, navigating and negotiating, limited only by the challenges we face.

Overlapping screens and translucent inks create the wallpaper's variety of shades from just two colours and long table printing was used to best represent the final aesthetic Ruth wanted to achieve.

### FABRIC

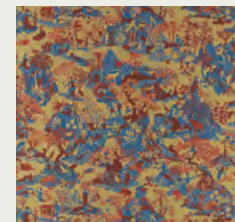


Avalonis  
322744



Avalonis  
322745

### WALLPAPER



Avalonis  
313021



Avalonis  
313033

---

## SEZINCOTE DAMASK

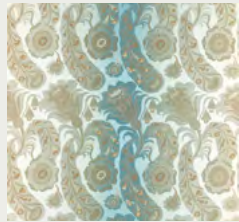
---

With the most incredible fluidity, this unusual bizarre silk is a faithful reinterpretation of a document from the Zoffany archive. Named after Sezincote, the Cotswold house famed for its Far Eastern influences, we've added a fine ombre to enhance the beautiful movement of colour in this Italian made fabric.

### FABRIC



Sezincote Damask  
333299



Sezincote Damask  
333300





---

## GRAND PAISLEY

---

This grand three meter high paisley panel is inspired by a stunning antique wool shawl in the Zoffany archive. Beautifully detailed decorative tear shaped patterns, printed in tones of a single colour, create a look that's reminiscent of fabric on the wall. Produced on a grass cloth textured vinyl, this wallcovering is fabulously hardwearing.

### WALLPAPER



Grand Paisley  
313019



Grand Paisley  
313018







---

## COROMANDEL

---

Named after India's Coromandel coast, where hand block printed fabrics are created to showcase artisan techniques, this contemporary weave is a reinterpretation of an archive design. Replicating all the original detail on a lustrous satin ground, this design is perfect for curtains and lightly used upholstery.

### FABRIC



Coromandel  
333297



Coromandel  
333296





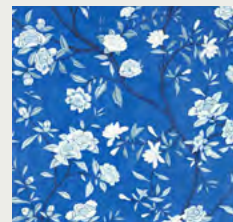
---

## NOSTELL PRIORY

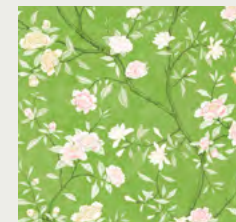
---

Based on a Chinese printed wallcovering hanging in Yorkshire's Nostell Priory, this climbing rose design originally featured in Zoffany's National Trust II collection. Popular amongst the aristocracy in the late 18th century, our captivating chinoiserie is produced in two new colourways on a non-woven ground.

### WALLPAPER



Nostell Priory  
313031



Nostell Priory  
313030



Nostell Priory  
NTP06001



Nostell Priory  
NTP06002



Nostell Priory  
NTP06004



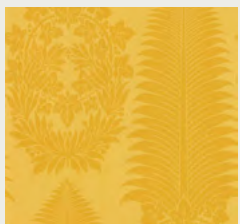
---

## MARSDEN'S PALM

---

Incredibly well suited to taller rooms, or an excellent way to give intimate spaces the illusion of height, the oversized vertical palms of this rotary printed damask take their inspiration from French interiors. With a wonderfully tall repeat and fine striae, this wallpaper is available in a choice of three elegant colourways.

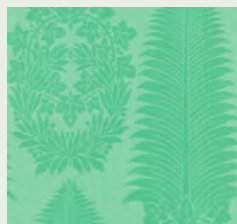
### WALLPAPER



Marsden's Palm  
313022



Marsden's Palm  
313023



Marsden's Palm  
313024





---

## NOOTKA

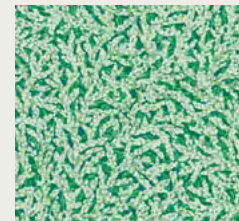
---

Inspired by the Nootka conifer, this surface printed wallpaper has the appearance of looking upwards through a tree canopy. With a subtle textural feel, almost like layered branches, it shares a wonderful sense of depth.

### WALLPAPER



Nootka  
313029

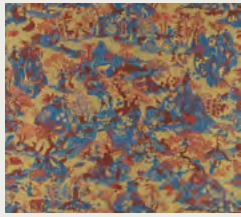


Nootka  
313028



Nootka  
313027

# WALLPAPER INDEX



Avalonis | 313021



Avalonis | 313033



Belvoir | 312651



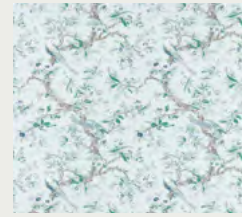
Belvoir | 312652



Belvoir | 312654



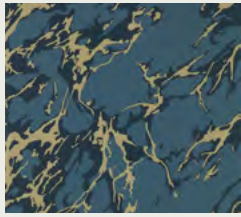
Chintz | 313013



Chintz | 313014



Elswick Paisley |  
312645



French Marble |  
313025



French Marble |  
313026



Grand Paisley | 313018



Grand Paisley | 313019



Marsden`s Palm  
Damask | 313022



Marsden`s Palm  
Damask | 313023



Marsden`s Palm  
Damask | 313024



Nostell Priory | 313030



Nostell Priory | 313031



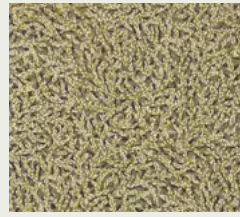
Nostell Priory |  
NTP06001



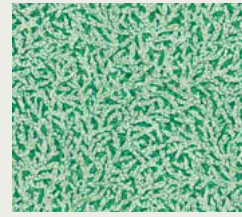
Nostell Priory |  
NTP06002



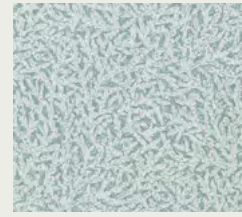
Nostell Priory |  
NTP06004



Nootka | 313027



Nootka | 313028



Nootka | 313029



Phaedra | 312621



Phaedra | 312622



Pompadour | 313015



Pompadour | 313016



Pompadour | 313017



Storks & Thrushes |  
313032



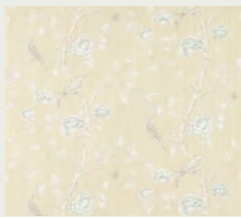
Verdure | 313020



Verdure | 310430



Verdure | 310431



Woodville | 311345



Woodville | 311346



Woodville | 311348

# FABRIC INDEX



Anar | 333294



Anar | 333295



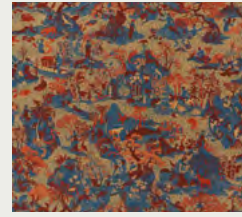
Arden | 320476



Arden | 320477



Arden | 320478



Avalonis | 322744



Avalonis | 322745



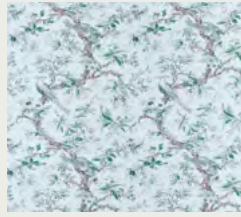
Belvoir | 322616



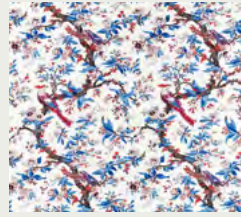
Belvoir | 322613



Belvoir | 322615



Chintz | 322736



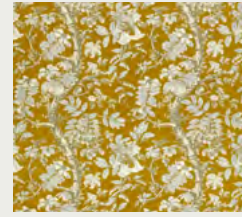
Chintz | 322737



Chintz | 322738



Coromandel | 333296



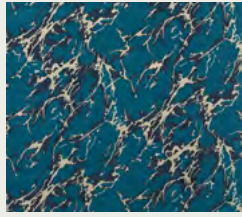
Coromandel | 333297



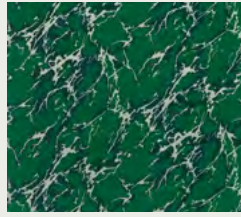
Flamestitch Tree |  
333298



French Marble |  
322748



French Marble |  
322749



French Marble |  
322750



Kalamkari | 321699



Kalamkari | 321696



Kalamkari | 321698



Phaedra | 322739



Phaedra | 322740



Pompadour | 322741



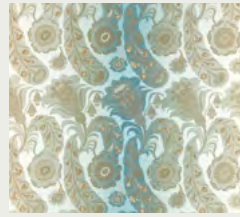
Pompadour | 322742



Pompadour | 322743



Sezincote Damask |  
333299



Sezincote Damask |  
333300



Stork & Thrushes |  
322747



Verdure | 322746



Verdure | 320464



Verdure | 320465



Woodville | 321432



Woodville | 321433



Woodville | 321434

# ZOFFANY

## CONTACT INFORMATION

### **Sanderson Design Group Head Office**

Chalfont House, Oxford Road  
Denham UB9 4DX  
Tel: +44 (0) 20 3457 5862

### **Press Office**

Email: [press@sandersondesigngroup.com](mailto:press@sandersondesigngroup.com)  
Tel: + 44 (0) 1895 221005

### **Consumer & Trade Enquiries**

Email: [enquiries@sandersondesigngroup.com](mailto:enquiries@sandersondesigngroup.com)

### **For further information**

[zoffany.sandersondesigngroup.com](http://zoffany.sandersondesigngroup.com)

### **To find your nearest stockist**

[zoffany.sandersondesigngroup.com/find-a-retailer](http://zoffany.sandersondesigngroup.com/find-a-retailer)

### **London Showroom**

1st Floor, South Dome, Design Centre,  
Chelsea Harbour, London SW10 0XE  
T: +44 203 903 3700  
E: [showroom@sandersondesigngroup.com](mailto:showroom@sandersondesigngroup.com)

### **New York Showroom**

D&D Building  
979 3rd Avenue, Suite 409  
New York 10022  
T: +1 800 395 8760  
E: [sales-ny@zoffany.com](mailto:sales-ny@zoffany.com)

### **Chicago Showroom**

222 Merchandise Mart Plaza  
Suite 6 - 117  
Chicago 60654  
T: +1 312 929 2058  
E: [sales-chicago@sandersondesigngroup.com](mailto:sales-chicago@sandersondesigngroup.com)

### **Dubai Showroom**

The Prism Tower  
Office 2708, Floor 27  
PO Box 391982, Business Bay  
Dubai, United Arab Emirates  
T: +971 4361 9766  
E: [infome@sandersondesigngroup.com](mailto:infome@sandersondesigngroup.com)

### **Netherlands Showroom**

ETC Licht & Interieur  
Randweg 20  
4104 AC Culemborg  
T: +31 (0) 65349 3696  
E: [international@sandersondesigngroup.com](mailto:international@sandersondesigngroup.com)

### **Germany Showroom**

Sanderson Design Group  
Kronenstrasse 4  
76133 Karlsruhe  
T: +49 721- 981 985-60  
E: [verkauf@sandersondesigngroup.com](mailto:verkauf@sandersondesigngroup.com)

### **Russia Showroom**

Anataliya Zhivova 10  
123100 Moscow  
T: +7 (0) 985 442 7144 / +7 (0) 926 698 7132  
E: [sandersonrussia@gmail.com](mailto:sandersonrussia@gmail.com)

[zoffany.sandersondesigngroup.com](http://zoffany.sandersondesigngroup.com)

A PROUD MEMBER OF SANDERSON DESIGN GROUP